

Implementation Areas Overview Chart

About This Chart

- ❖ The **Implementation Agreement (IA)** is an historic agreement between Blueberry River First Nations (**Blueberry/BRFN**) and British Columbia (**BC**), which guides their new, **collaborative approach** to **land, water, and resource stewardship** in Northeast BC.
- ❖ The IA aims to ensure that Blueberry Members can meaningfully exercise their **Treaty 8 rights**, and provides **stability** and **predictability for industry** in the region.
- ❖ This chart shows how the different parts of the IA work together to support these goals.

LEGEND

New business

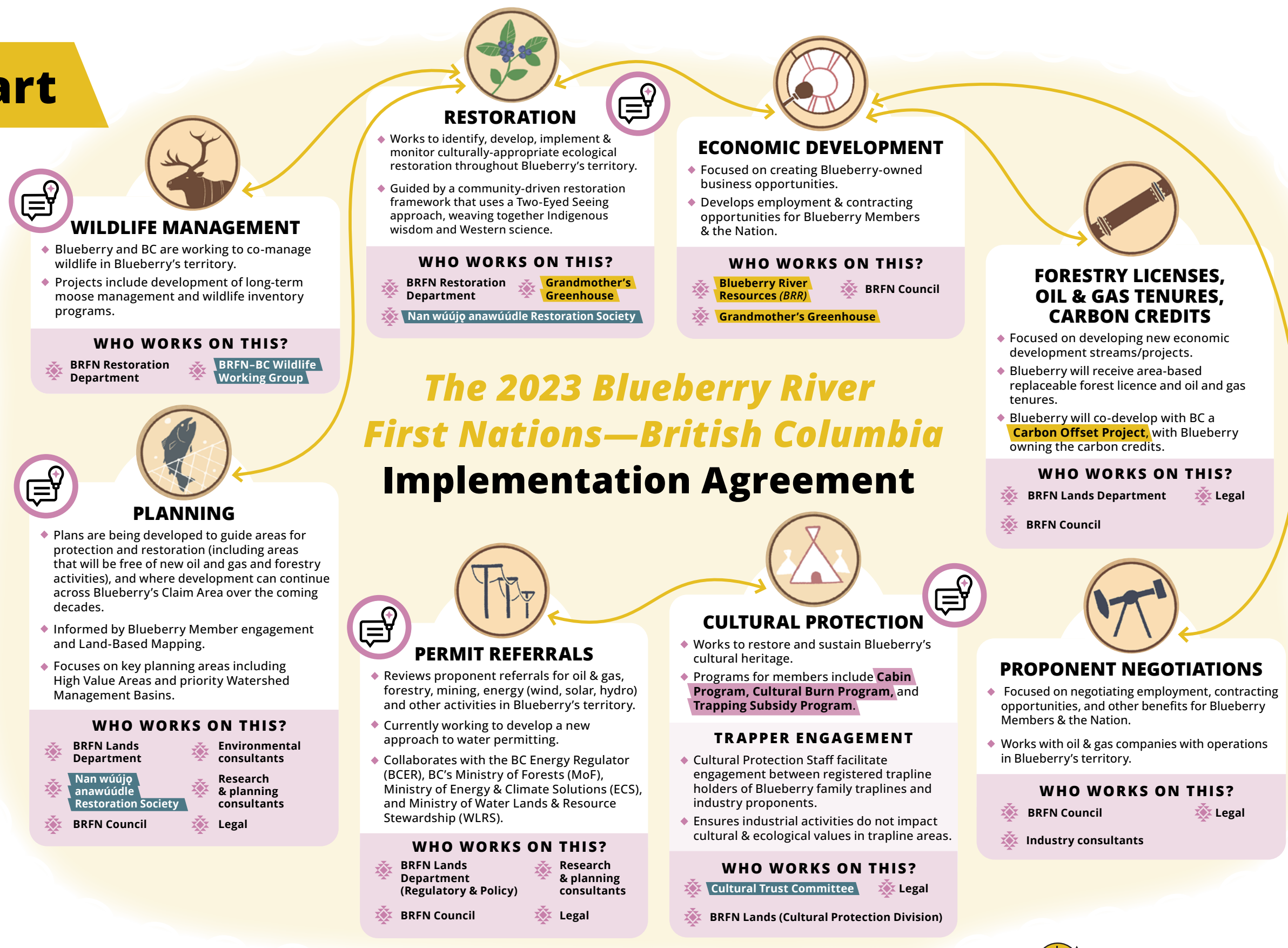
New Member program

New organization

Areas that collaborate with one another

MEMBER ENGAGEMENT

- ❖ Engagement with Blueberry Members, Elders, knowledge holders, family groups, trapline holders, and staff is a key element of Planning, Wildlife Management, Restoration, Permit Referrals and Cultural Protection.
- ❖ Engagement for Planning is being facilitated through the Community Advisory Group, Land-Based Mapping Project, and gatherings with Members.
- ❖ Engagement aims to ensure that plans for restoring and protecting areas are grounded in Blueberry values and priorities.



Key Terms

ASO KWA / GRANDMOTHER'S GREENHOUSE

Nation-led supply chain ecological restoration company, producing native seeds and seedlings for restoration within Treaty 8 territory, with a vision to bring native seeds into the hands of Blueberry Members.

BCER

BC Energy Regulator, the new name for the BC Oil and Gas Commission (OGC)

NAN WÚÚJQ ANAWÚÚDLE RESTORATION SOCIETY

Joint BC and Blueberry group whose aim is to grow into a world-class restoration centre, with expertise and experience in leading-edge restoration within Blueberry's Claim Area. Seven (7) people—Three (3) appointed by BC, Four (4) by Blueberry—to become the Society's Board of Directors. Manages the Nan wúújq anawúúdle Restoration Fund.

REGULATORY & POLICY, BRFN LANDS DEPARTMENT

Develops, implements, and supervises review processes for new development applications, as well as resource-related policies and procedures.

CULTURAL PROTECTION DIVISION, BRFN LANDS DEPARTMENT

Strengthening Blueberry Members' cultural practices and connection to the land, building capacity for Members to practice their Treaty rights to hunt, fish, and trap.

BLUEBERRY RIVER RESOURCES (BRR)

Independent entity to advance Blueberry's economic priorities and provide opportunities, sustainability and self-sufficiency for Members now and for generations to come.

CARBON CREDITS

The enhancement of carbon gas removal and reduction of carbon gas emissions resulting from:

- ☀ The deferral and/or reduction of certain timber harvesting activities;
- ☀ Enhanced forest protection measures and/or deferrals;
- ☀ Any other land protection measures.

CULTURAL TRUST COMMITTEE

The Cultural Trust Committee is a group composed of Blueberry Members only, tasked with recommending programs for language restoration, trail upkeep, opening up traplines, trapping and other cultural-based learning opportunities.

FOREST TENURE

Forest tenures are an agreement between a company, a community or an individual and the BC government that grant the rights and outlines the conditions (through licenses and permits) under which timber is harvested from provincial land.

HV1s

Blueberry's Critical Cultural Areas, identified by Blueberry Members, including elders and cultural knowledge holders. HV1A areas are 100% protected from new oil and gas development and new forestry activity, while HV1Bs are 80%, and HV1Cs are 60% protected.

LAND-BASED MAPPING

Land-Based Mapping involves Blueberry Members being out on the land, documenting and recording important cultural values and features for protection via the HV1 planning process.

PROPONENT

The company that applies for or holds an oil and gas permit.

TRAPLINE HOLDER

A person or persons with the right to use a particular area of land for trapping, under the provincial trapline registration scheme. This includes the right to harvest fur and construct trapline cabins.

TWO-EYED SEEING

A guiding principle that encourages the integration of Indigenous and Western ways of knowing to gain a more complete understanding of the world.

WILDLIFE WORKING GROUP

Made up of Members representing Blueberry, BC and a jointly appointed biologist, the main purpose of this group is to provide First Nations values and perspectives to wildlife management in Blueberry's territory.

WMB

Watershed Management Basins, the priority watersheds for land management and restoration:

- ☀ Blueberry River watershed (including part of the Middle Beatton River watershed west of the Beatton River)
- ☀ Upper Beatton River watershed
- ☀ A portion of the Lower Sikanni Chief River Watershed (south of the Sikanni Chief River)

